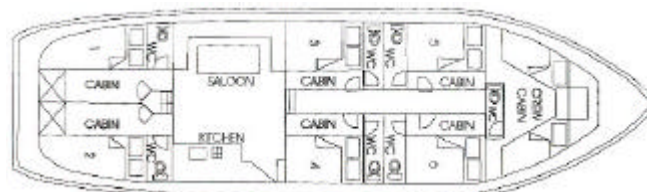
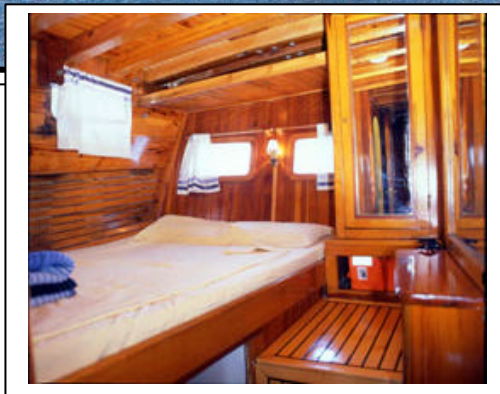
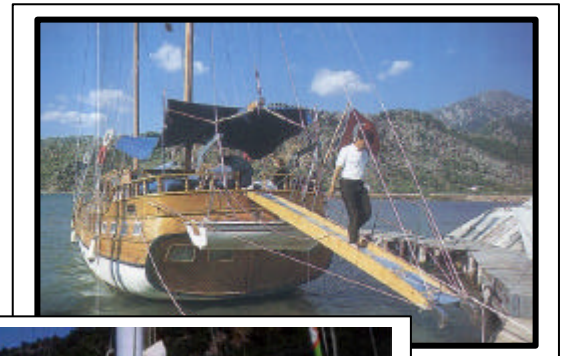
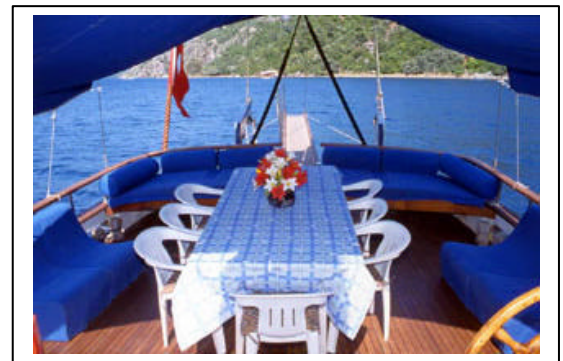




FIORINO TOUR



6 doubles cabins / all cabins include Shower & WC toilette

L.O.A	22 mt./ 77 ft.	Windsurf	VHF Radio – Telephone
BEAM	6,0 mt	Fishing Gear	Refrigerator & Deep freeze
ENGINE	2 x 165 HP Perkins	Snorkeling gear	Tender with 15 HP Outboard Engine
GENERATOR	14 Kva	TV and Music System	Refrigerator & Deep Freeze
FUEL TANKS	1.500 lt.	Full Equipped Galley	Crew 3 persons
WATER TANKS	3.500 lt.	Hot water	Capacity 12 guests
ELECTRICITY	220 V		

