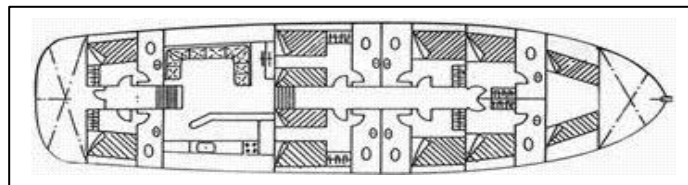
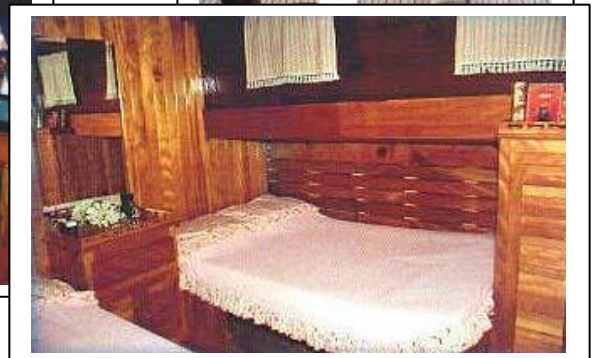
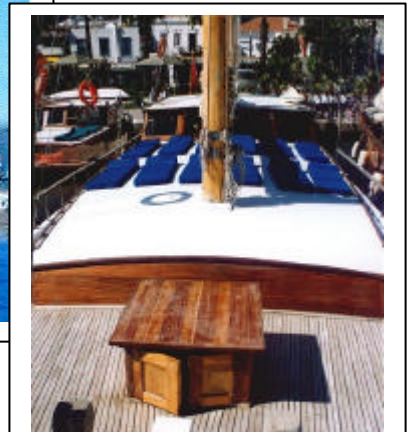




FIORINO TOUR



6 cabins / All Cabins Includes Shower & WC toilette  
4 double bed cabins, 2 twin bed cabins

**L.O.A**  
**BEAM**  
**ENGINE**  
**GENERATOR**  
**FUEL TANKS**  
**WATER TANKS**  
**ELECTRICITY**  
**SPEED**

26 mt./ 80 ft.  
6,8 m  
2 X 240 HP Mann  
30 Kw  
2.500 lt.  
8.000 lt.  
24 V/ 220V  
10 Knots

Windsurf  
Fishing Gear  
Snorkel Gear  
TV, Cd Stereo Music System  
Full Equipped Galley  
Hot water

VHF Radio – Telephone  
Cellular Telephone  
Dinghy with Outboard Engine  
Refrigerator&Deep Freeze  
Air conditioned  
Crew 3 persons  
Capacity: 12 guests

